

MEASURING HEALTH AND WELLBEING FOR AN URBAN GREEN SPACE VALUATION TOOLKIT

Ben Wheeler, Senior Lecturer,
European Centre for Environment &
Human Health, University of Exeter
Medical School

• [vivideconomics](#)

UNIVERSITY OF
EXETER

**BARTON
WILLMORE**

Innovate UK



GREENKEEPER
ENHANCING URBAN GREEN SPACE



THE CONTEXT

26th May Planning permission has been granted for new homes to be built on this park in Bexley

Tom Bull
Trainee Reporter



There has been campaign against the proposals

14 comments

Get the latest local news straight to your inbox every day

Sign up

Outline planning permission has been granted for the development of houses on 3.5 hectares of green open space in Sidcup.

Bexley Planning Committee voted through plans for 30 houses and 30 flats in Old Farm Park, despite a residents' campaign against it.

According to the planning application, 122 car spaces will be provided for 600 homes.

The scheme has outlined 35 per cent of homes to be built as affordable housing.

The council received 28 letters and emails objecting to the proposals for reasons such as loss of wildlife and traffic issues.

Malcolm Right, a resident of Old Farm Avenue and member of campaign group Save Old Farm Park, said at the meeting: "We fundamentally object to the sale and development of any part of the site."

The end of parklife as we know it? The battle for Britain's green spaces

Britain's parks are in crisis. With councils such as Bristol cutting spending to zero, and land being lost to developers, what's happening to our public gardens?



calvinthegreat



News

Sport

Weather

iPlayer

Source

NEWS

Home UK World Business Politics Tech Science Health Family & Education

England Local News Regions Liverpool

Knowsley Council to sell off 10% of park for development

29 November 2017



calvinthegreat

News

Sport

W



NEWS

Home UK World Business Politics Tech Science

England Local News Regions Liverpool

Knowsley Council plans to sell off 10% of parks dropped

11 June 2018



Share



News Local News Reddish

One of Stockport's most controversial developments starts in Reddish Vale

Builders are creating 70 homes in the country park as part of the Brinnington Masterplan



BY ALEX SCAPENS
14:43, 10 NOV 2016

NEWS

Enter your postcode to see news and information near you
Community updates, Crime Statistics, Local News & Events and much more...

Go

RECOMMENDED



A man with Down's syndrome thought his 40th birthday party was ruined when Elvis cancelled on him... then a celebrity saved the day



Why Gary Neville is buying property in Manchester under other names



The battle for Manchester city centre



Meet Blessing Burgess - the mum-of-three who took on a parking company in court - and won



Police called to street in Shaw amid reports of a man wielding a knife



A man has had a £20,000 Audemars Piguet watch snatched from his wrist in the city centre

Get Daily updates directly to your inbox

Subscribe



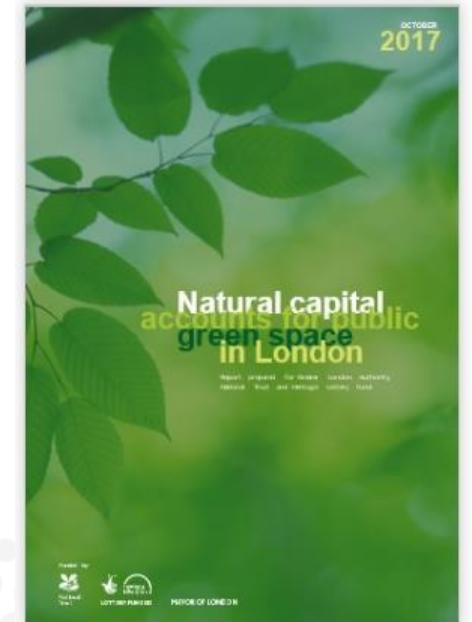
THE AIM

- A tool to empower cities and developers to accurately assess the multiple benefits of green infrastructure
- Supporting informed policy and business decisions
- Making the case for investment
- Supported by Innovate UK – aim to develop a commercial product



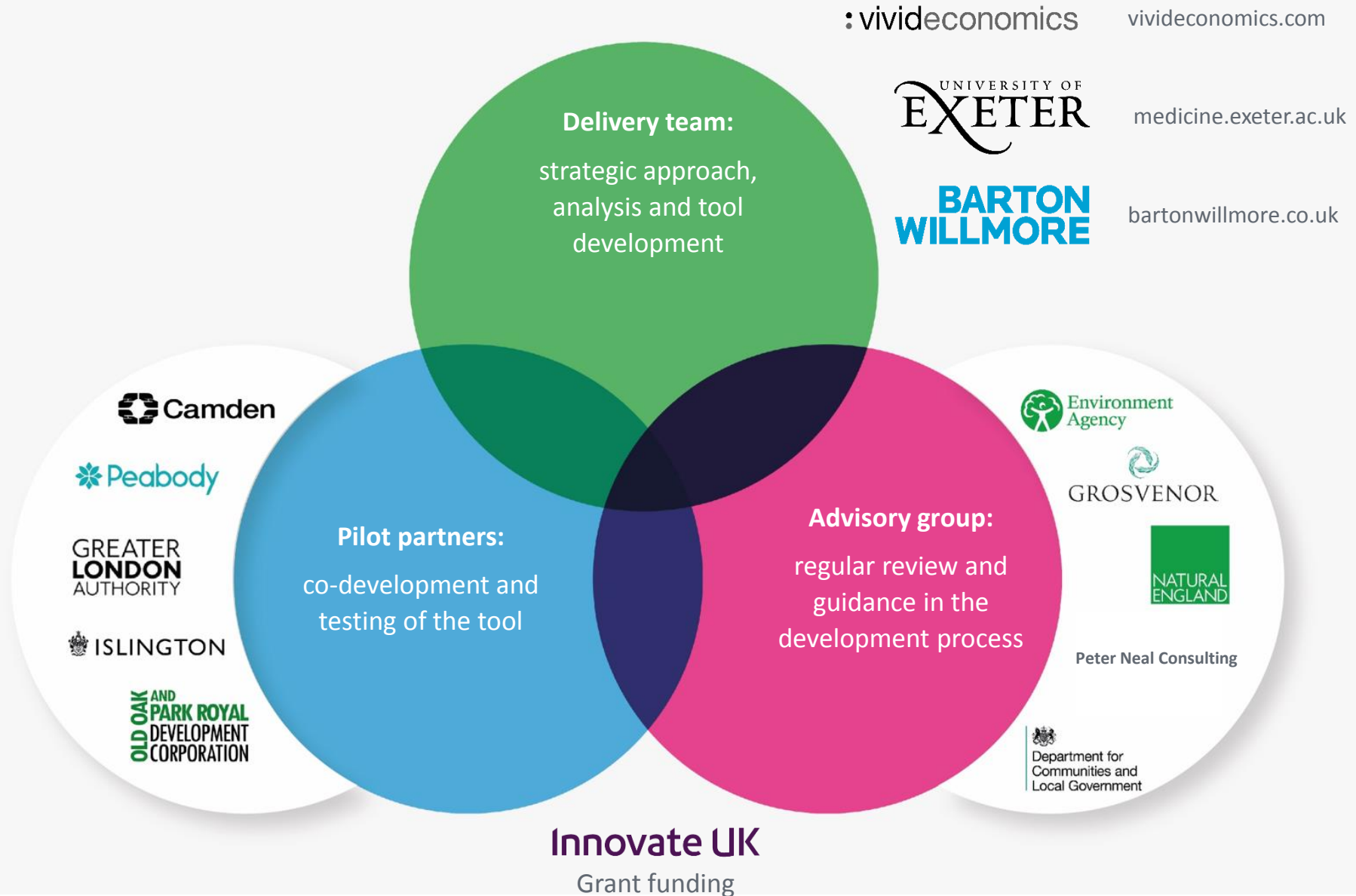
BUILDING ON PREVIOUS WORK

- Studies such as Vivid Economics for GLA – valued London's public green spaces at >£5bn/year
- Evidence on a range of benefits – monetary and non-monetary values
- Various existing valuation tools (range of approaches, metrics and focus)



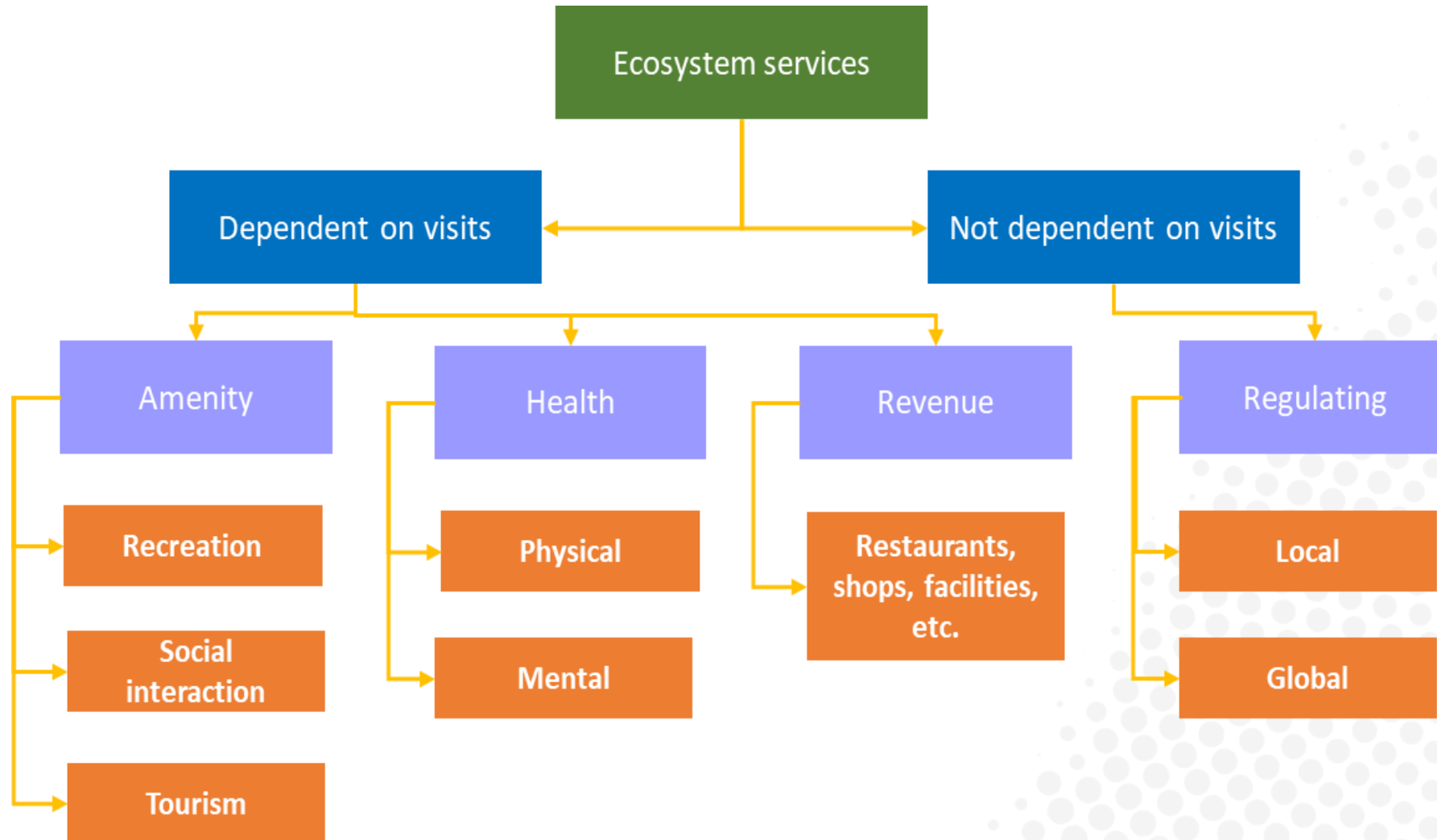


WHO IS DEVELOPING THE TOOL?





VALUES FRAMEWORK





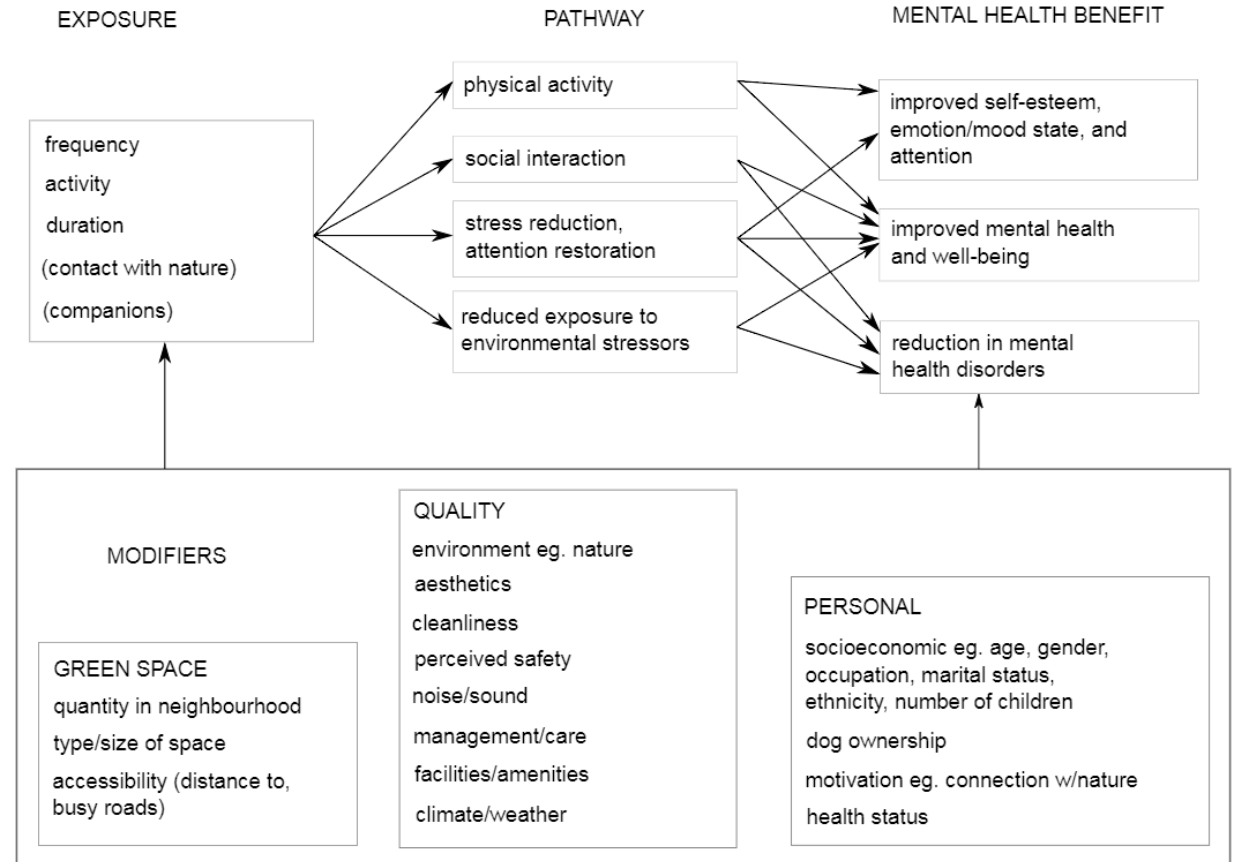
SERVICES MEASURED

SERVICE	PHYSICAL EFFECT	PHYSICAL METRIC
Physical health	Reduction in risk of physical ill health due to active visit	QALYs
Mental health	Reduction in risk of mental ill health	GHQ score
Recreation	Number of recreational visits	Visits (by origin, socioeconomic group)
Amenity (house prices)	Influence of local green or blue space on value	House price
Carbon sequestration	Tonnes CO ₂	Value of non-traded carbon
Noise	Level of noise in parks	Decibels
Air quality	Concentration of SO ₂ , PM _{2.5} , PM ₁₀ , NO ₂ , O ₃	Avoided health costs of pollutant exposure
Relative abundance of biodiversity and ecological quality	Habitat/ecological diversity	Units of habitat that support species diversity and/or measure of habitat dissimilarity
Revenues/rents	Visits to revenue earning facilities	Number of visits



HEALTH VALUES

- Based on conceptual frameworks for health outcomes
- Using existing evidence, plus some novel analyses





PARK-SPECIFIC HEALTH BENEFITS (FROM VISITS/GREENSPACE USE)

- Existing analyses of MENE data*: visit characteristics -
>
 - Stress reduction
 - Wellbeing (ONS)
 - Physical activity (activity x duration = MET Minutes)
- Calculating park-specific health benefits by combining:
 - health data from MENE
 - data on park visitor numbers (estimated from survey, model and mobile app data sources)
- Produce total benefit value and separate values by

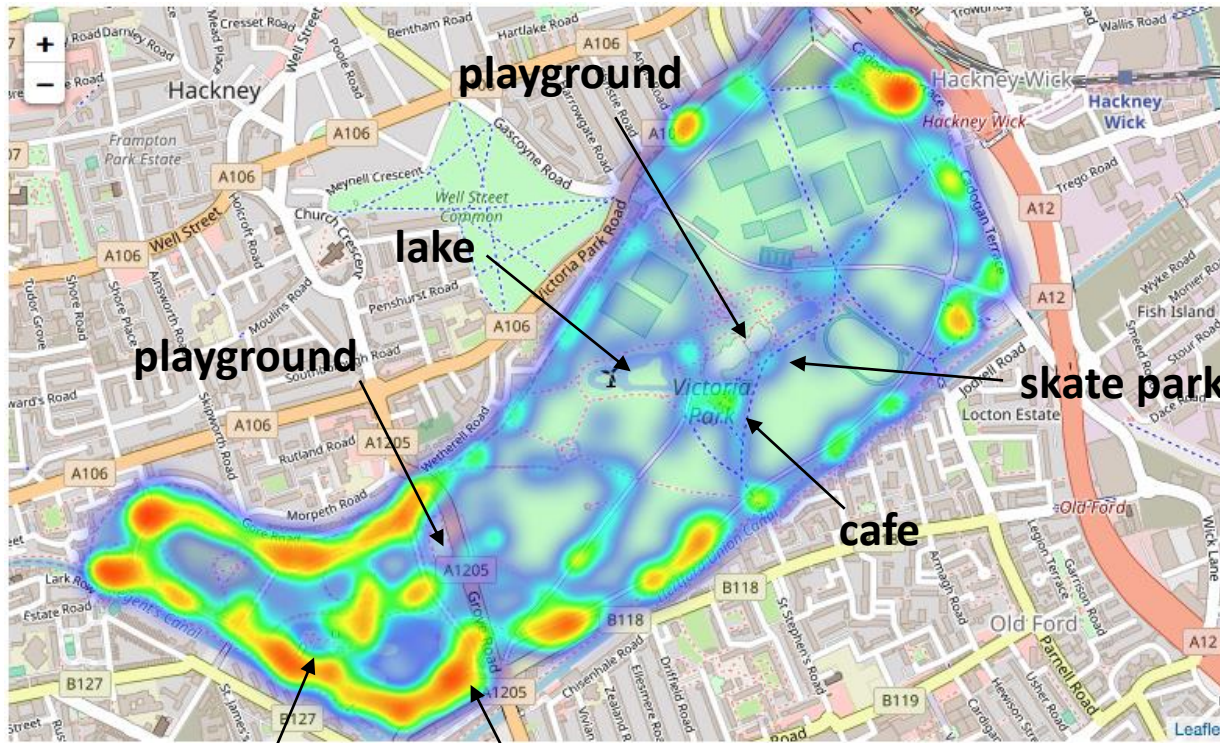
* e.g.

White, M.P., Pahl, S., Ashbullby, K., Herbert, S., Depledge, M.H., 2013. **Feelings of restoration from recent nature visits.** Journal of Environmental Psychology 35, 40-51.

White, M.P., Pahl, S., Wheeler, B.W., Depledge, M.H., Fleming, L.E., 2017. **Natural environments and subjective wellbeing: Different types of exposure are associated with different aspects of wellbeing.** Health and Place 45, 77-84.

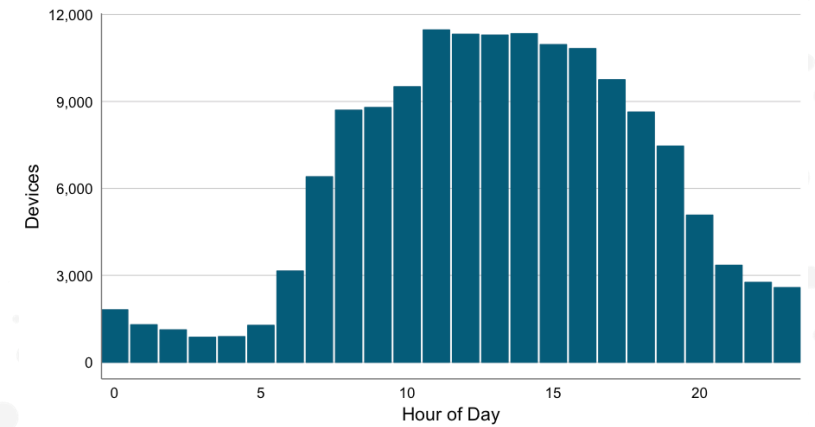
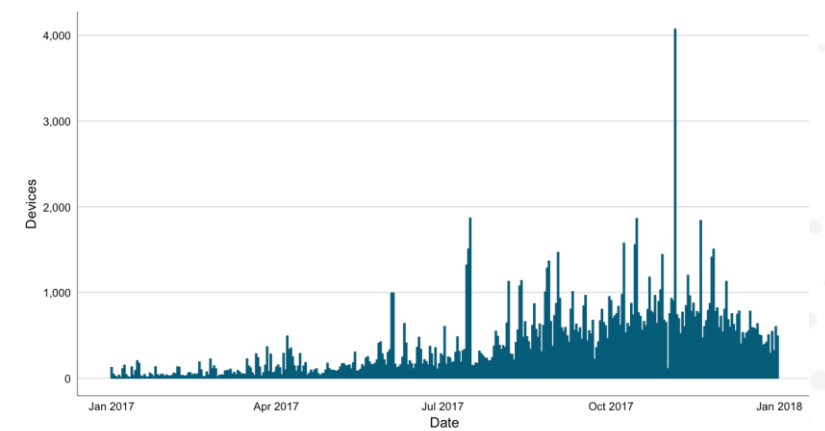


USE DATA – MOBILE APP DERIVED DATA (ANONYMISED BULK DATA)



lake

cafe





HEALTH BENEFITS (NEIGHBOURHOOD)

- Existing analyses: neighbourhood nature -> longer term health outcomes*
- Not all explained by visits:
 - Some captured in valuing environmental regulation (e.g. avoided flooding) – assessed separately
 - Some associated with ‘passive exposure’ (e.g. visual).
Include values of:
 - Gardens?
 - Green walls/roofs?
 - Street trees?

*e.g.

White, M.P., Alcock, I., Wheeler, B.W., Depledge, M.H., 2013. **Would you be happier living in a greener urban area? A fixed-effects analysis of panel data.** Psychological Science 24, 920-928.

Gascon, M., Triguero-Mas, M., Martinez, D., Davdand, P., Forn, J., Plasencia, A., Nieuwenhuijsen, M.J., 2015. **Mental health benefits of long-term exposure to residential green and blue spaces: a systematic review.** International Journal of Environmental Research and Public Health 12, 4354-4379.



ANALYSIS FRAMEWORK - NEIGHBOURHOOD

Health impact
of home/
neighbourhood

=

f(Home env
characteristics):
- Gardens

Remote
sensing,
greenspace
map

+

f (Individual
characteristics):

- Age
- Sex
- SES

MENE

+

f(Neighbourhood
characteristics):

- Deprivation
- Greenness
- Walkability
- Transport links

Census, TfL,
greenspace
map etc.



TOOLKIT PRODUCTION

- Evidence based
- Developed with user involvement throughout
- Appropriate to needs
- Commercial product, priced appropriately for different functions/markets (e.g. planning authorities, developers)

2018									2019								
Apr	May	Jun	Jul	Aug	Sep	Oct	Nov	Dec	Jan	Feb	Mar	Apr	May	Jun	Jul	Aug	Sep
Inception			Method			Analysis			Building			Testing			Final tool		



Architecture
Architecture and design
blog

'An embarrassment to the city': what went wrong with the £725m gateway to Cambridge?

Initially planned by Richard Rogers, CBI was to be a world-class arrival point, with park, piazza, heritage centre and affordable homes. Instead, it's 'a future slum' plagued by antisocial behaviour and sex-trafficking



Fenced off for two years ... Mill Park, part of the CBI development, is the only green space for 1,000 student flats and 350 homes. Photograph: Oliver Wainwright for the Guardian

The Telegraph

HOME | NEWS |

Money | Property

House prices | Buying and selling | Abroad | Retirement | West Country | Luxury

Home » Money » Property » Buy

Urban oasis: lakeside sites are the latest must-have for city developers



Woodberry Down, Berkeley's new development in Hackney, sits beside two former reservoirs totalling 27 acres of open water



www.greentoolkit.net

b.w.wheeler@exeter.ac.uk

:vivideconomics



@GreenkeeperUK



@greenkeeperuk

Innovate UK